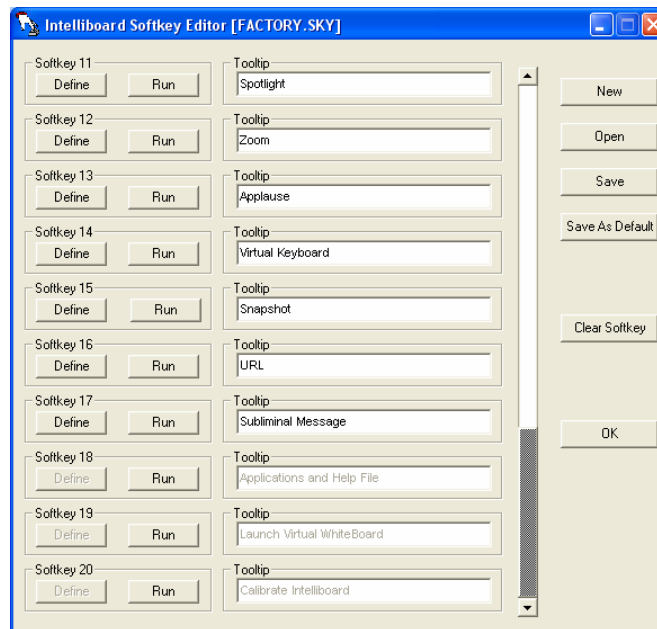


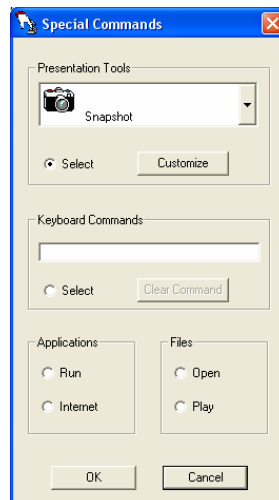
Redefining the Snapshot Softkey

By default the Snapshot softkey is set to take a picture of your full screen and save it to the Intelliboard or Mobilepresenter / Lesson Plan Resources / Snapshot folder. However, many teachers prefer to have a user definable area for taking snapshots, and may also want to save the snapshots in a different folder on their hard drive or network drive. You can easily accomplish this by redefining your Snapshot softkey.

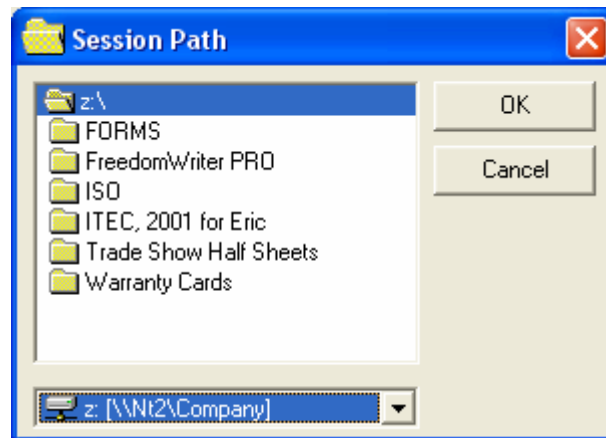
First, launch your softkey editor: Start / Programs / Intelliboard (or Mobilepresenter) / Softkey Editor. Scroll down to Softkey #15 and click **Define**



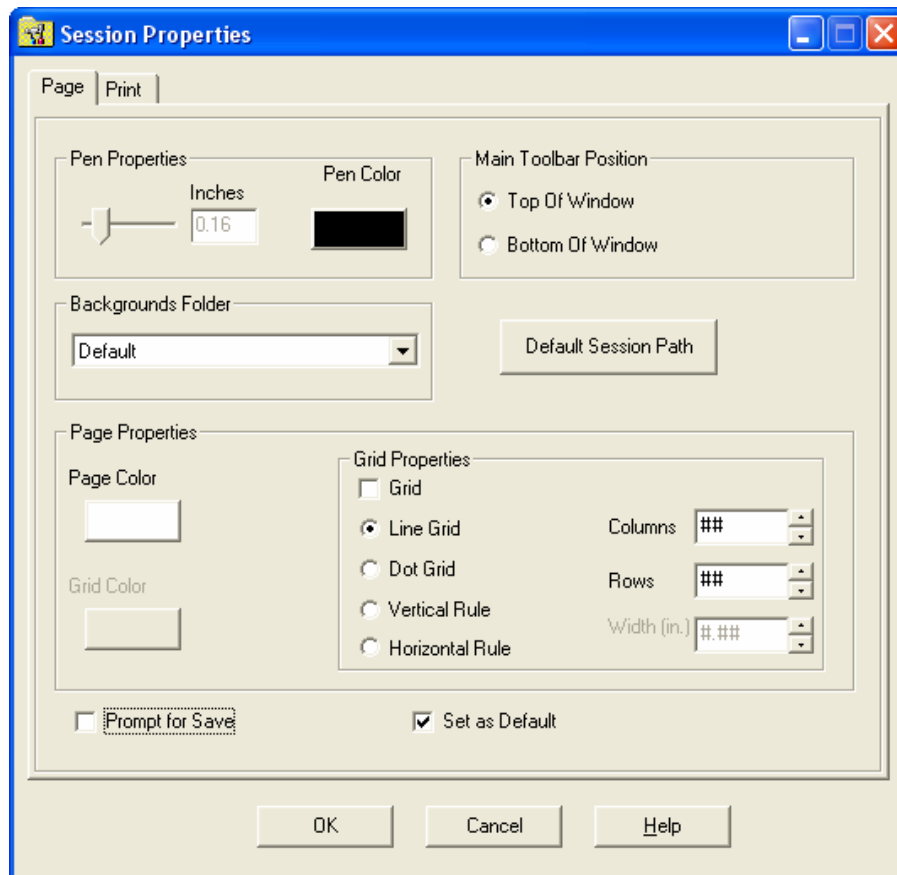
Now click **Customize**



Click the Browse button, browse to your network drive and select a folder to store your sessions.



Make sure you check the Save as Default checkbox and click OK to save your settings.



Now all your sessions will be saved to your specified path.