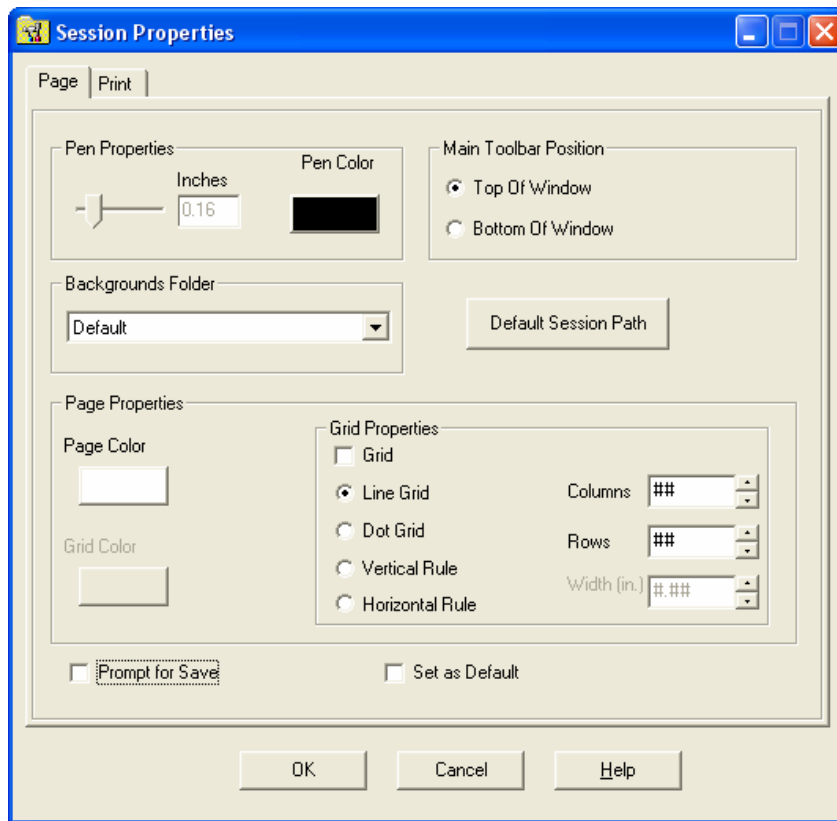


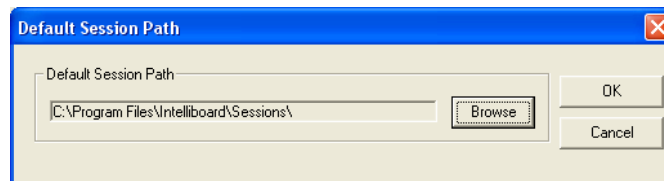
### Changing Your Session Path

By default, virtual whiteboard sessions are saved with a date stamp to the C:\Program Files\Intelliboard\Sessions folder. However, many teachers use a network drive to store their documents. You can easily change the default session path to store your sessions on your network drive.

Within virtual whiteboard, use the **Format/Options** drop down menu to open the Session Properties window.

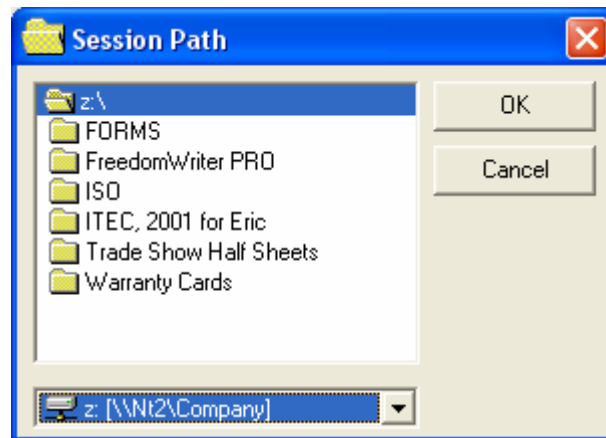


Click the **Default Session Path** button.

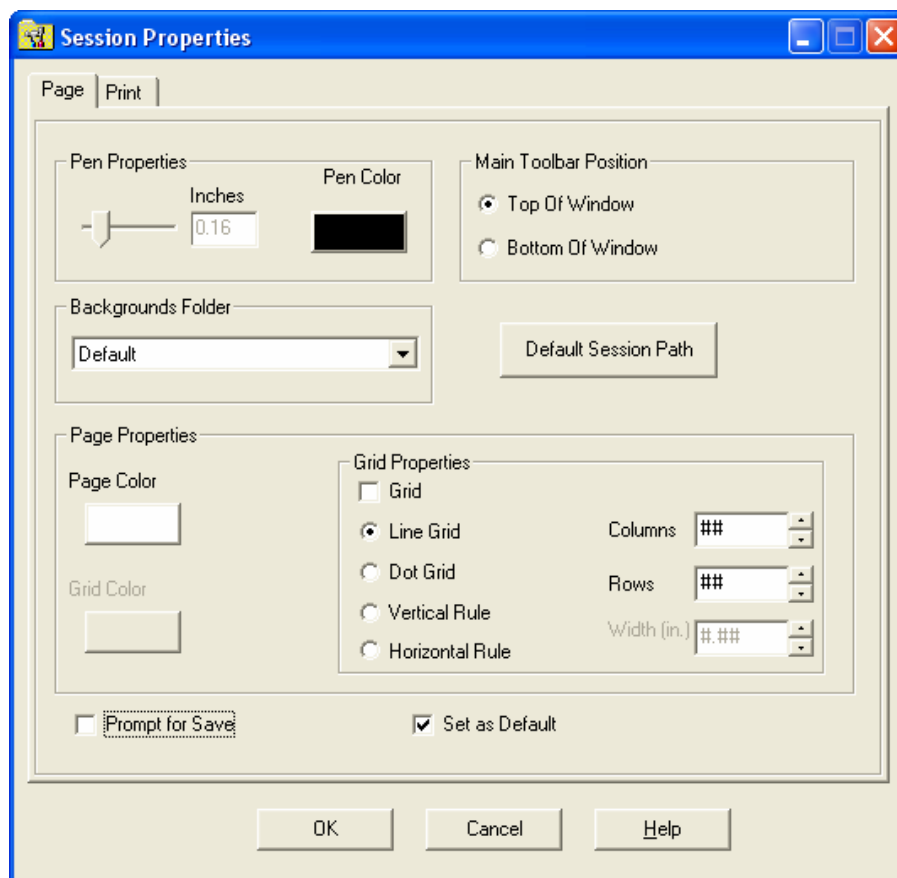


---

Click the Browse button, browse to your network drive and select a folder to store your sessions.



Make sure you check the Save as Default checkbox and click OK to save your settings.



Now all your sessions will be saved to your specified path.